

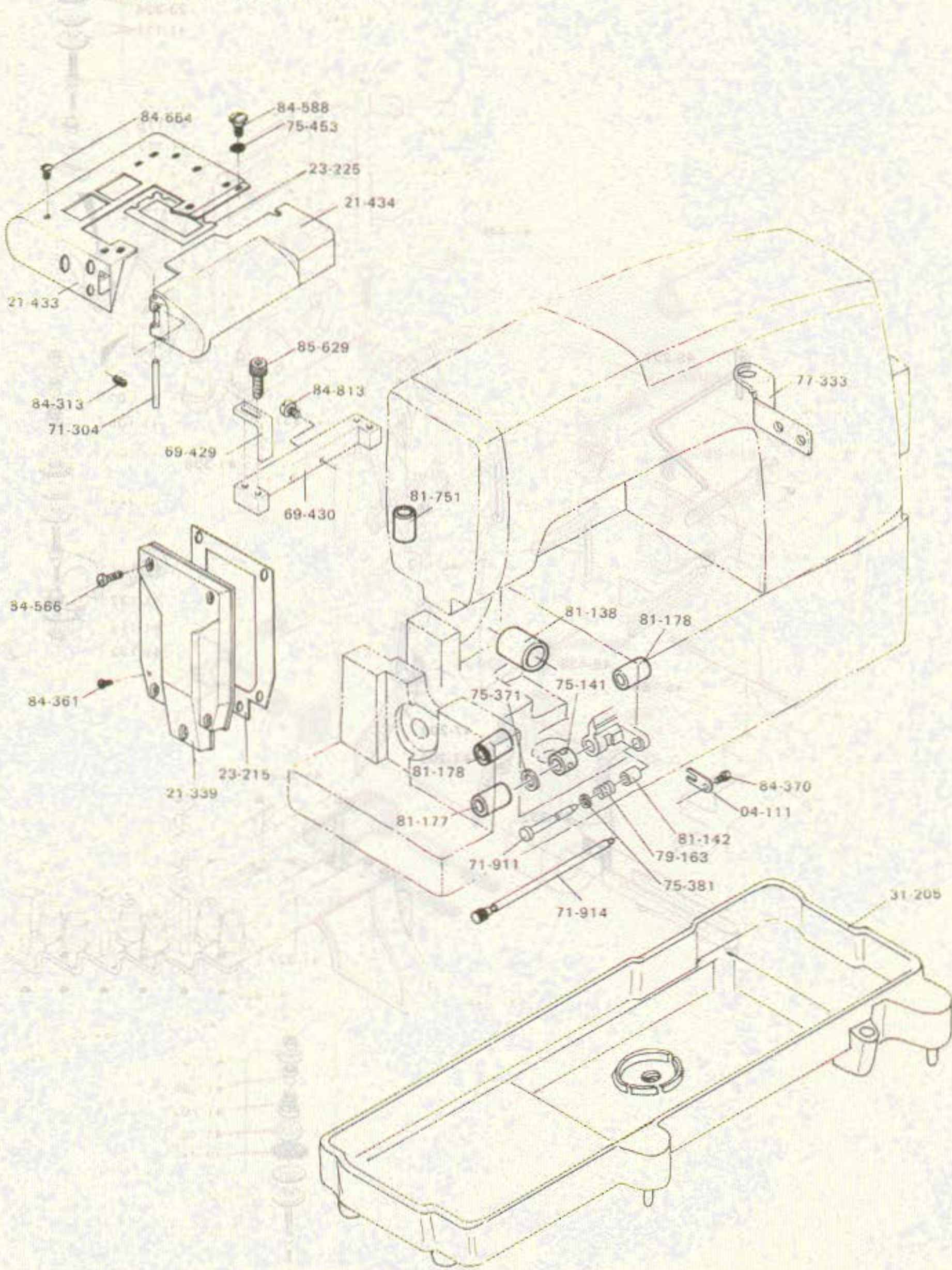
Housing components

Bushings

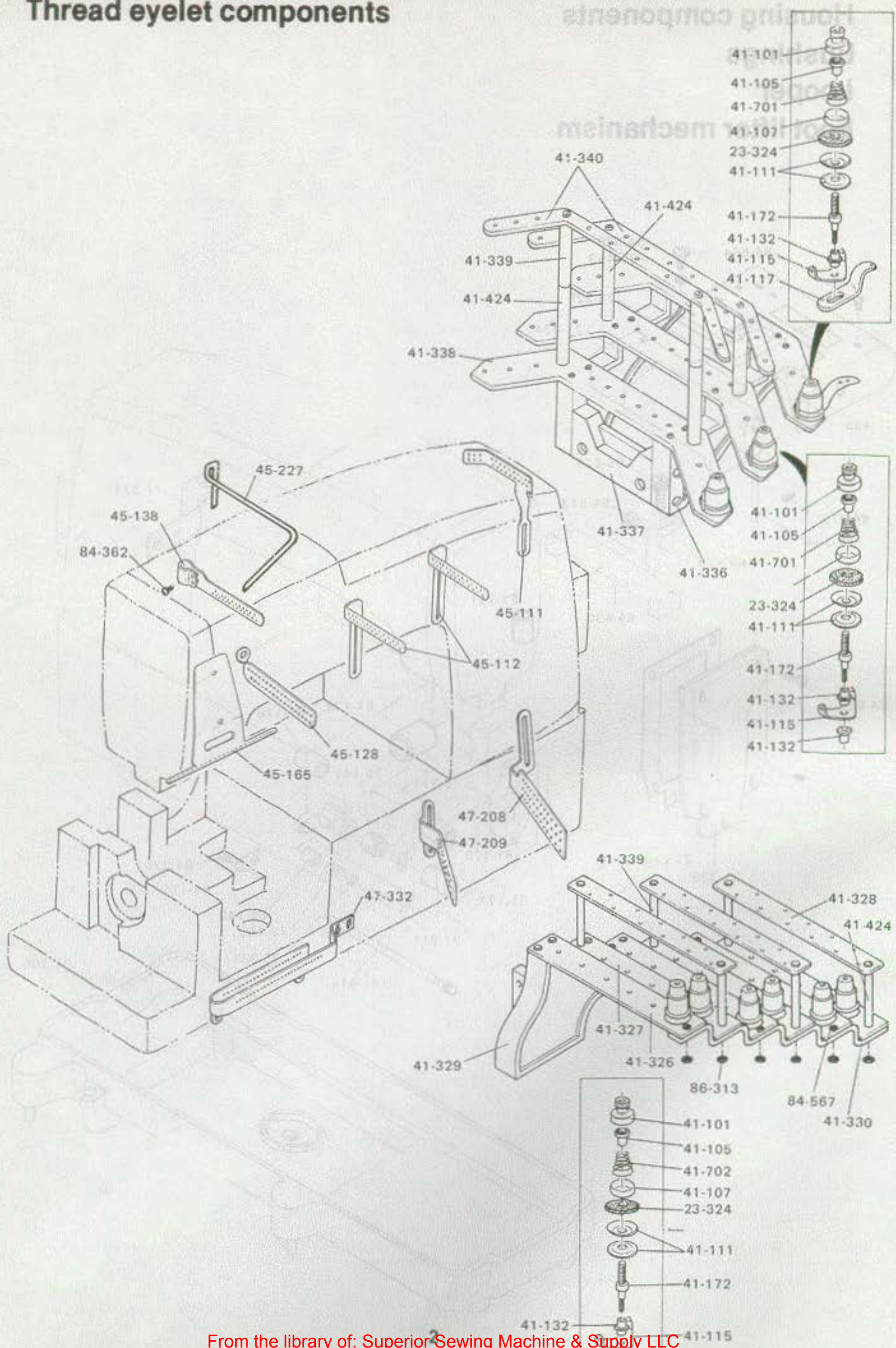
Looper

Foot lifter mechanism

Thread eyelet components

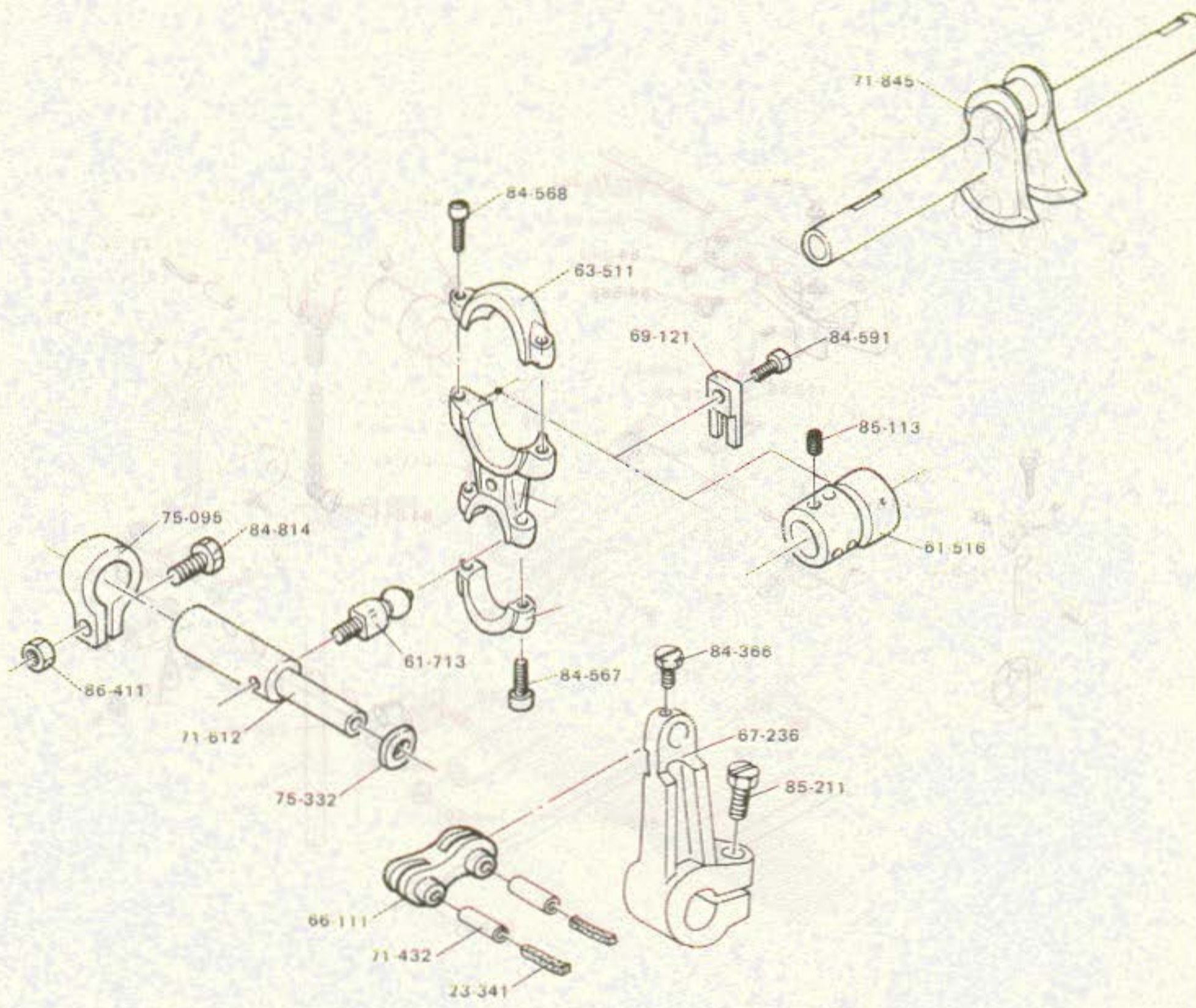


Thread eyelet components



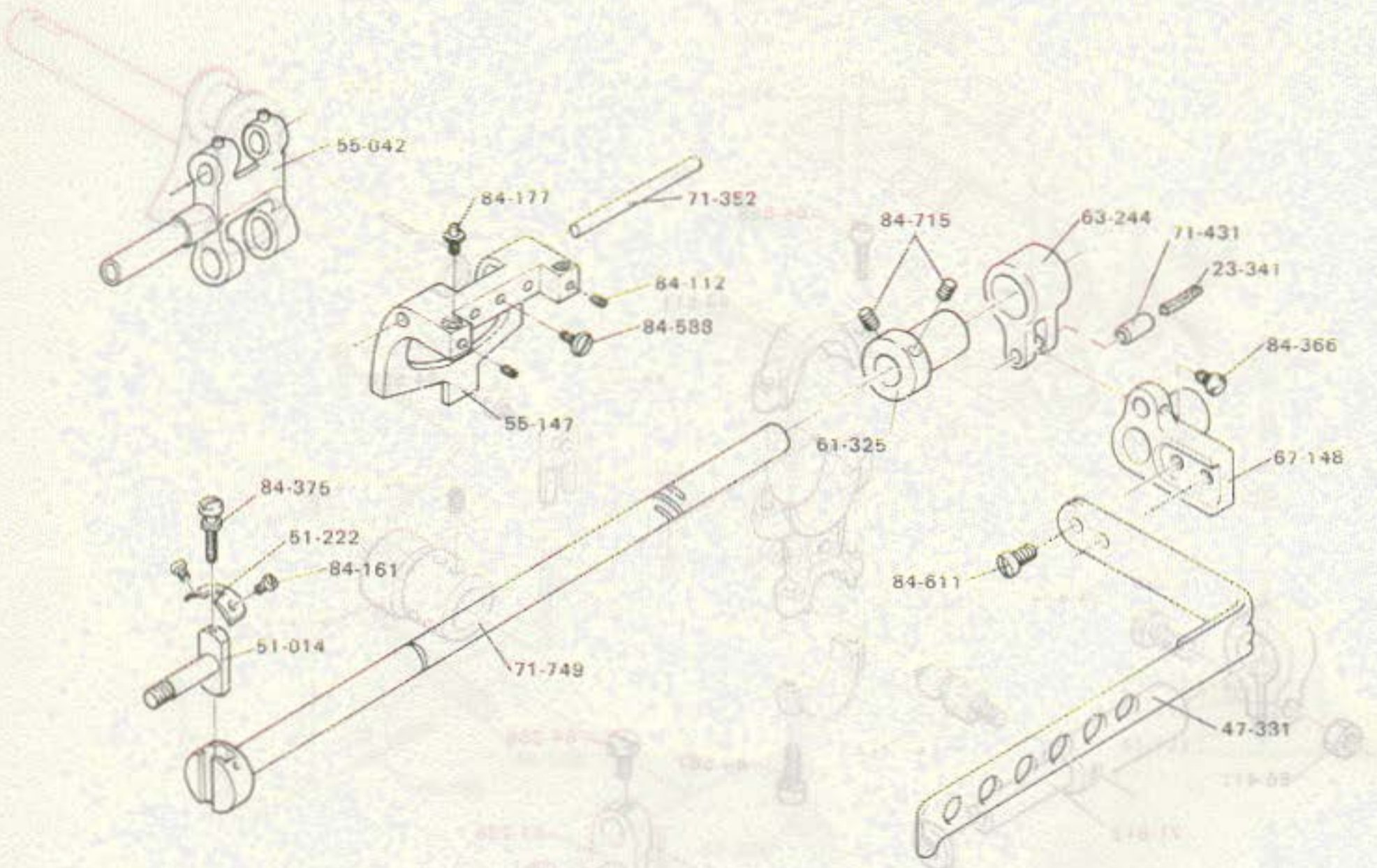
Needle lever crank

Feed rocker



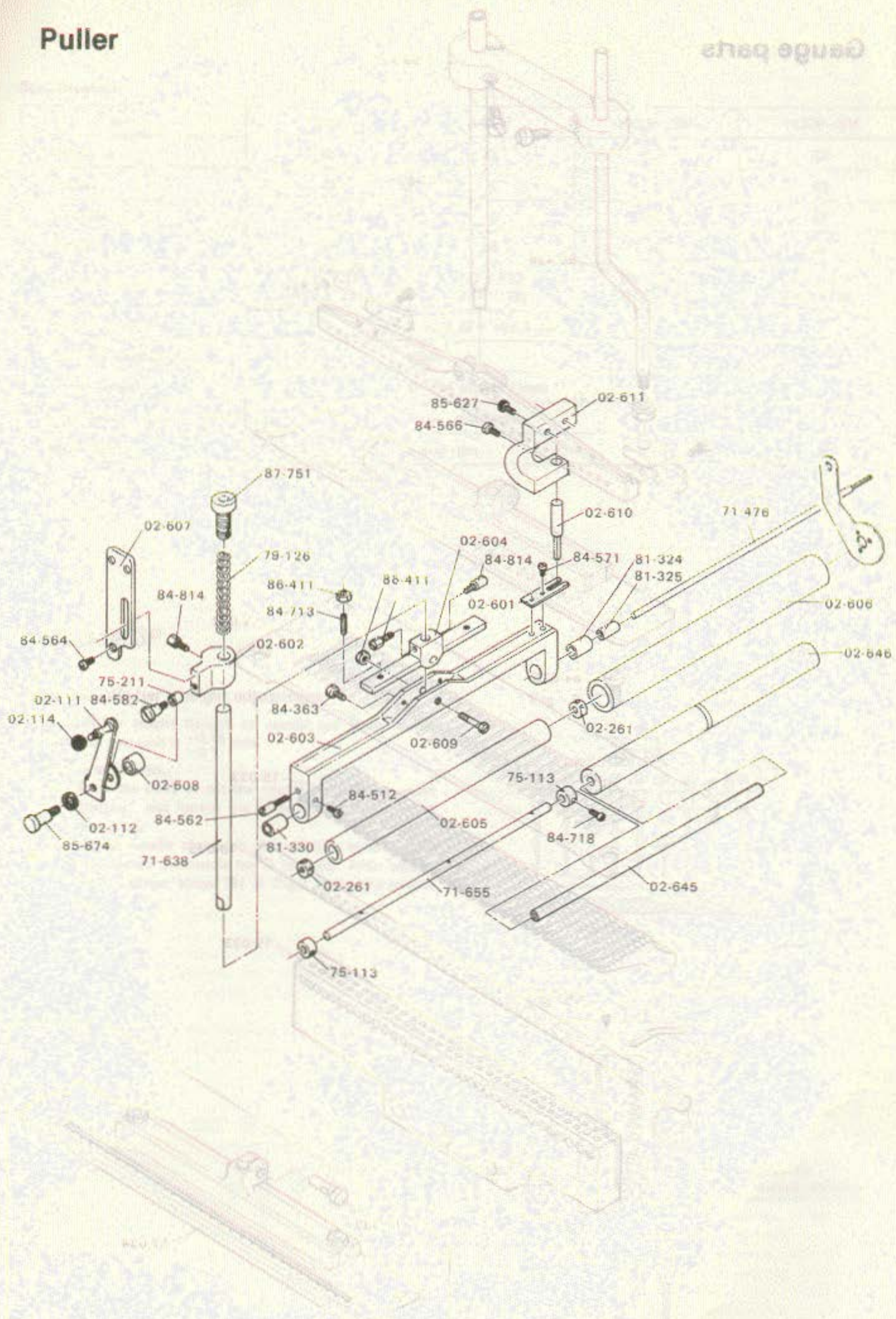
Feed rocker

Needle level crank



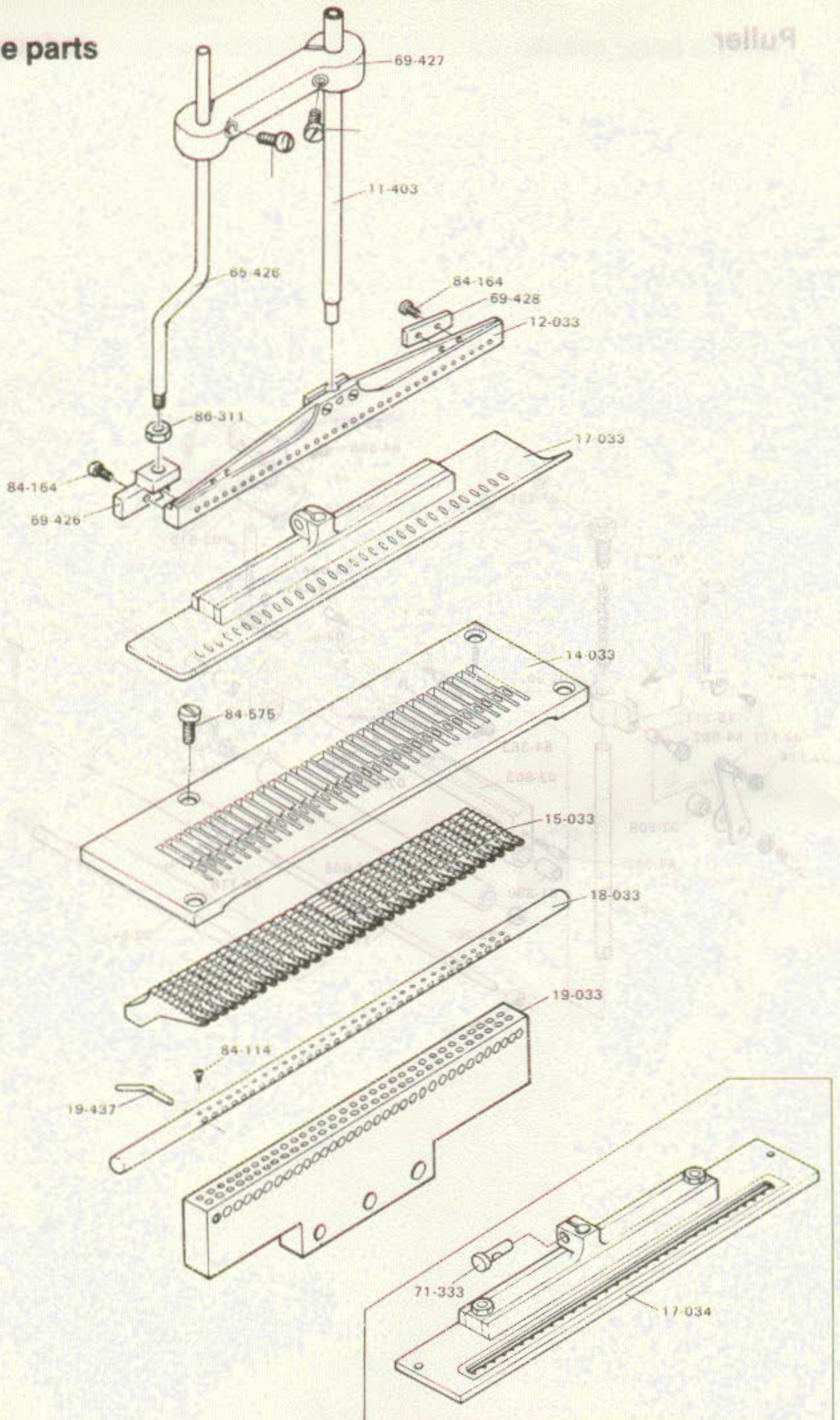
Puller

Garage parts



Gauge parts

Puller



Specification

Model	1033P	1433P	1033P-SM	1433P-SM
Needle	33	33	33	33
Looper	0	0	0	33
Spreader	0	0	33	33
Thread	33	66	66	99
Service needle	DV x K25 (#18 ~ 21)	UO x 113 (#11 ~ 18)	DV x K25 (#18 ~ 21)	UO x 113 (#11 ~ 18)
Needle gauge	4.76 x 32 = 152.3 mm			
Feeding mechanism	Plain			
Stitch length	6 - 24 stiches / inch			
Lubrication system	Fully automatic			
Max. speed	2,500 rpm			

DFB-1433P

1. Needle bar's height adjustment

Needle bar height (length of needle bar from: needle plate) of this unit is $+0.15$ mm.
 -0.1

Adjust as follows.

- 1) Turn the pulley to lift the needle bar to the highest position, and loosen the screw (B) in Fig.2 fixing needle bar.
- 2) Adjust needle clamp so that needles enter needle holes when the needle bar is lowered. After adjustment, tighten screw (B) in Fig.2 fixing the needle bar.

Fig. 1

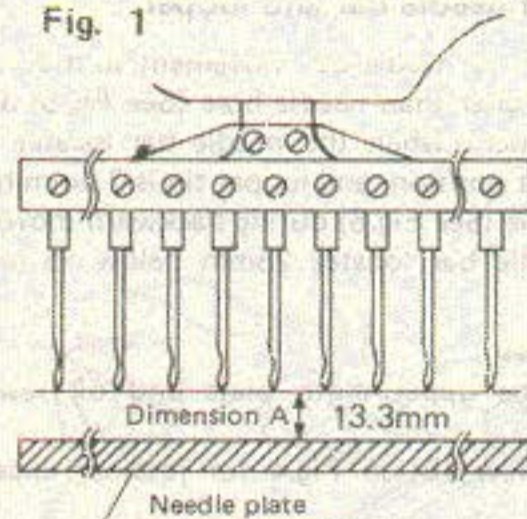


Fig. 2

